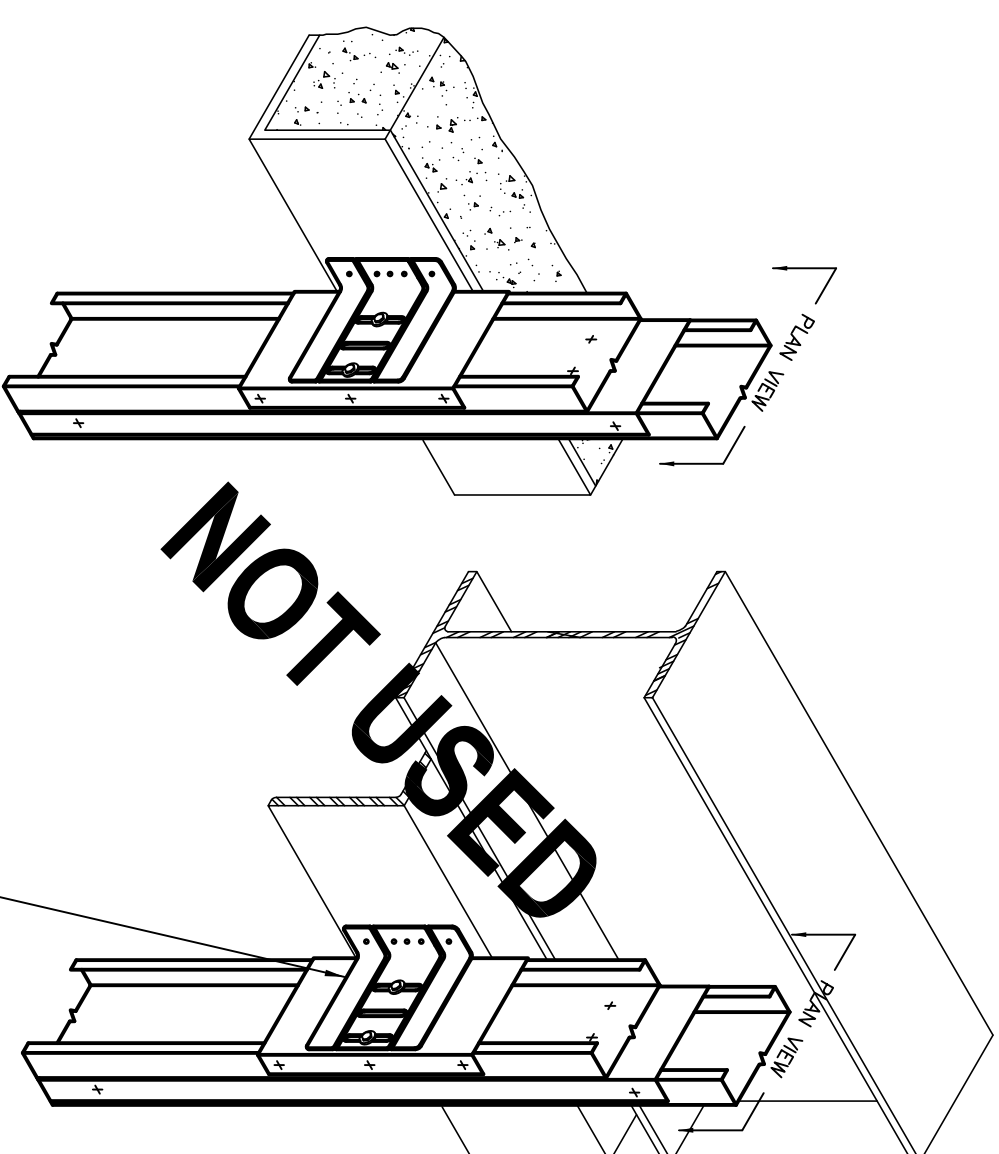


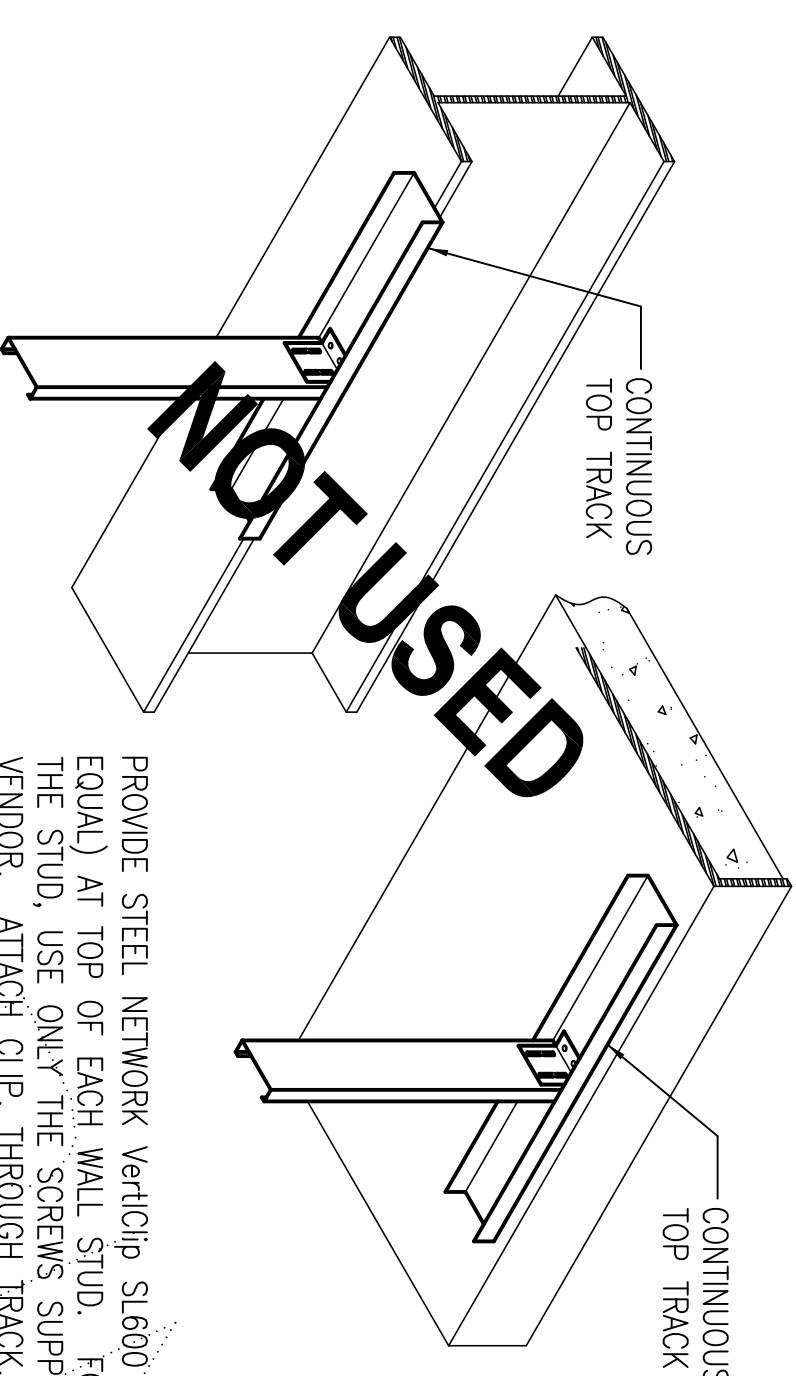
STEEL NETWORK Verticlip SLAB (OR APPROVED EQUAL) ATTACHED TO STUD w/ (2) #12 SCREWS (SUPPLIED w/ CLIP). ATTACH TO ANGLE w/ PAFs PER SCHEDULE.

1 SLIDE CLIP ON WALL STUD
DA-1



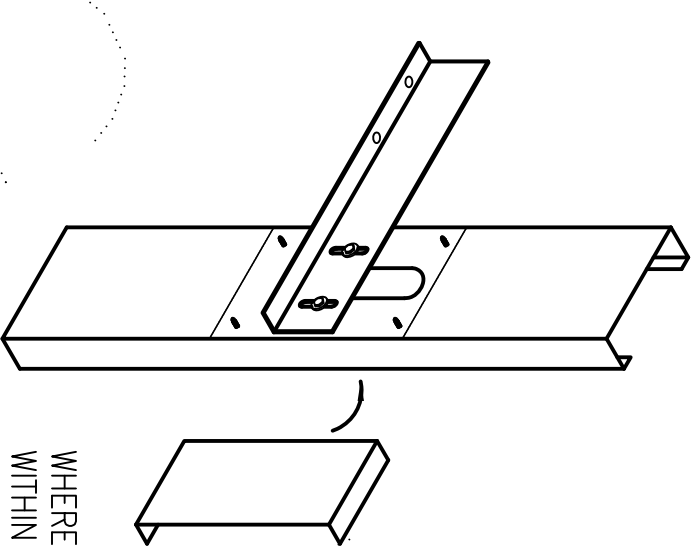
8" LONG FACE TRACK. SIZE AND THICKNESS TO MATCH STUD. ATTACH TO STUD w/ (6) #10 SCREWS AS SHOWN.

2 SLIDE CLIPS ON KING STUDS
DA-1



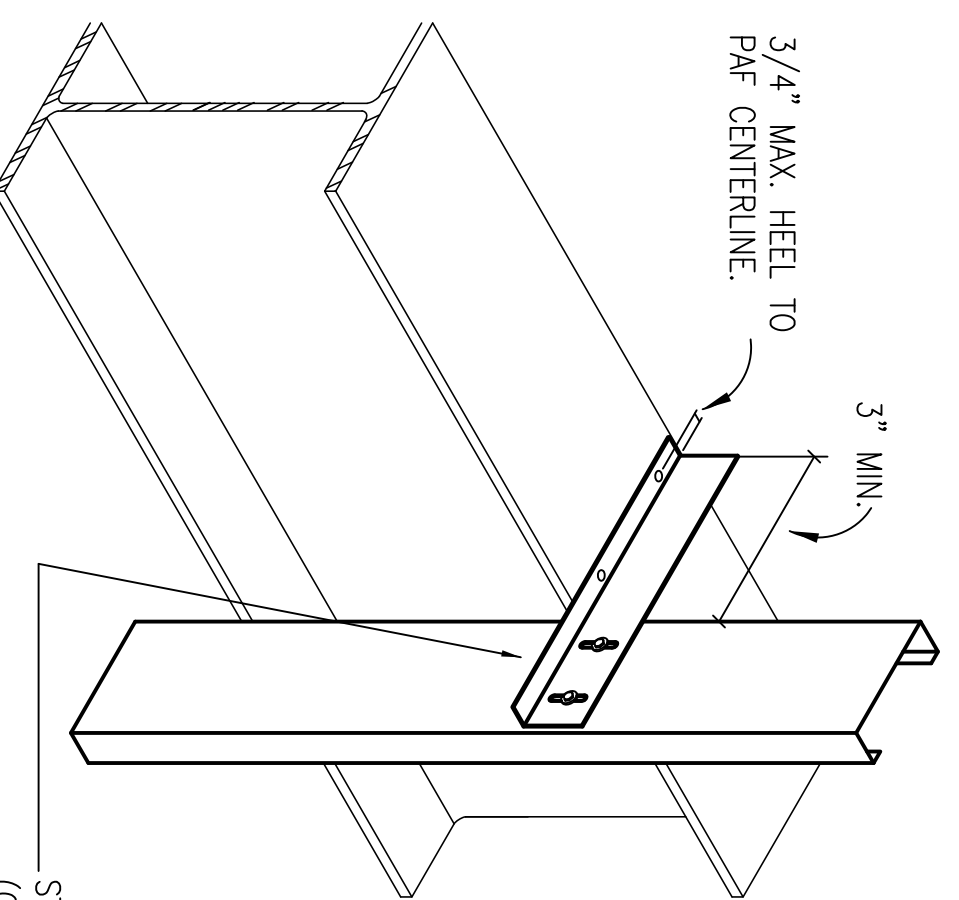
PROVIDE STEEL NETWORK Verticlip SL600 (OR APPROVED EQUAL) AT TOP OF EACH WALL STUD. FOR ATTACHING TO THE STUD, USE ONLY THE SCREWS SUPPLIED BY CLIP VENDOR. ATTACH CLIP, THROUGH TRACK, INTO STRUCTURAL STEEL, OR SLAB, w/ PAFs AS PER SCHEDULE. INSTALL WALL STUD w/ END GAP AS PER SCHEDULE.

3 DEFLECTION END CLIP ON STUD END (CURVED OR STRAIGHT WALLS)
DA-1



WHEREVER ANY PART OF A STUD WEB CUTOUT FALLS WITHIN 3 in. OF A DEFLECTION CLIP, PROVIDE A PIECE OF 6 OR 10 in. (AS REQUIRED) TRACK TO SERVE AS A WEB REINFORCEMENT. CENTER THE TRACK APPROXIMATELY ON THE DEFLECTION CLIP. JOIN TRACK TO STUD w/ (4) #10 SCREWS AS SHOWN. PLACE SCREWS APPROX. 1 in. FROM EDGE OF DEFLECTION CLIP TO ALLOW FOR STUD MOVEMENT.

4 REINFORCED WEB CUTOUT
DA-1



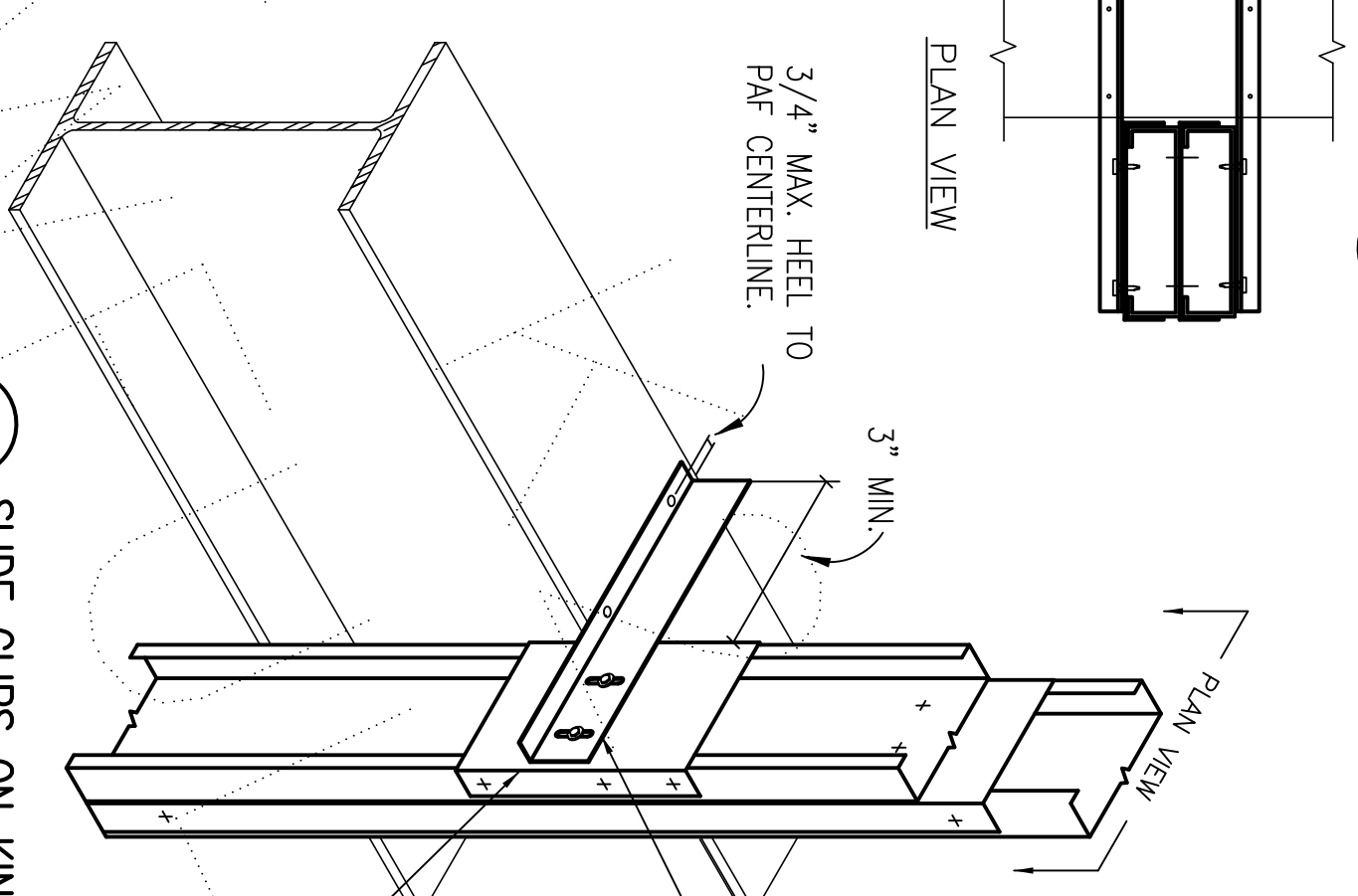
3/4" MAX. HEEL TO PAF CENTRELINE.

FOR ATTACHMENT TO WALL STUDS USE ONLY SCREWS SUPPLIED BY CLIP VENDOR.

NOTE: SIS CLIPS ARE NOT SYMMETRICAL AND WILL NEED TO BE ORDERED IN EITHER A RIGHT- OR LEFT-HANDED ORIENTATION, DEPENDING UPON WHICH DIRECTION THE STUD FLANGES ARE TURNED AND WHICH BEAM FLANGE (TOP OR BOTTOM) IS THE ATTACHMENT POINT.

STEEL NETWORK Verticlip SIS DEFLECTION CLIP (OR APPROVED EQUAL) ATTACHED TO STUD w/ SCREWS SUPPLIED BY CLIP VENDOR. ATTACH TO BEAM (TOP OR BOTTOM FLANGE) w/ PAFs PER SCHEDULE.

5 SLIDE CLIP ON WALL STUD
DA-1

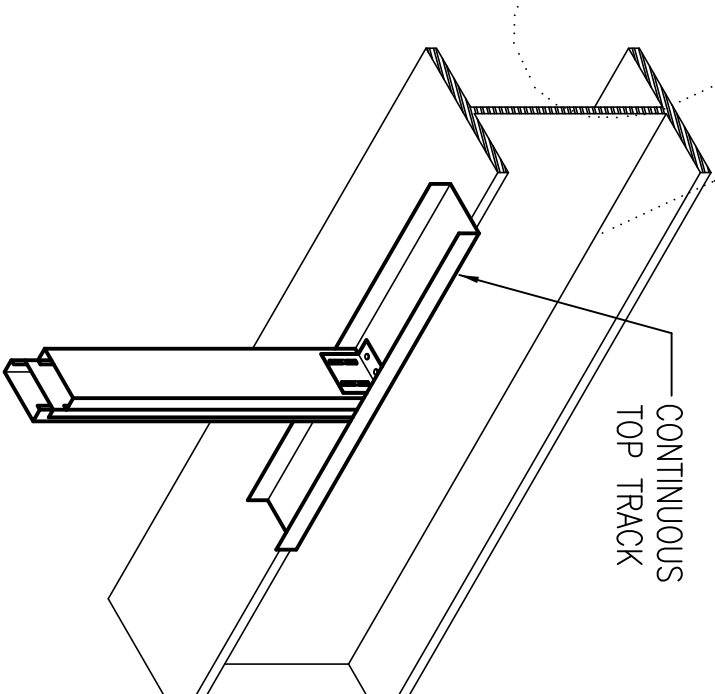


3/4" MAX. HEEL TO PAF CENTRELINE.

STEEL NETWORK Verticlip SIS DEFLECTION CLIPS (OR APPROVED EQUAL) ATTACHED TO EA. SIDE OF KING STUD GROUP w/ SCREWS SUPPLIED BY CLIP VENDOR. ATTACH TO BEAM (TOP OR BOTTOM FLANGE) w/ PAFs PER SCHEDULE.

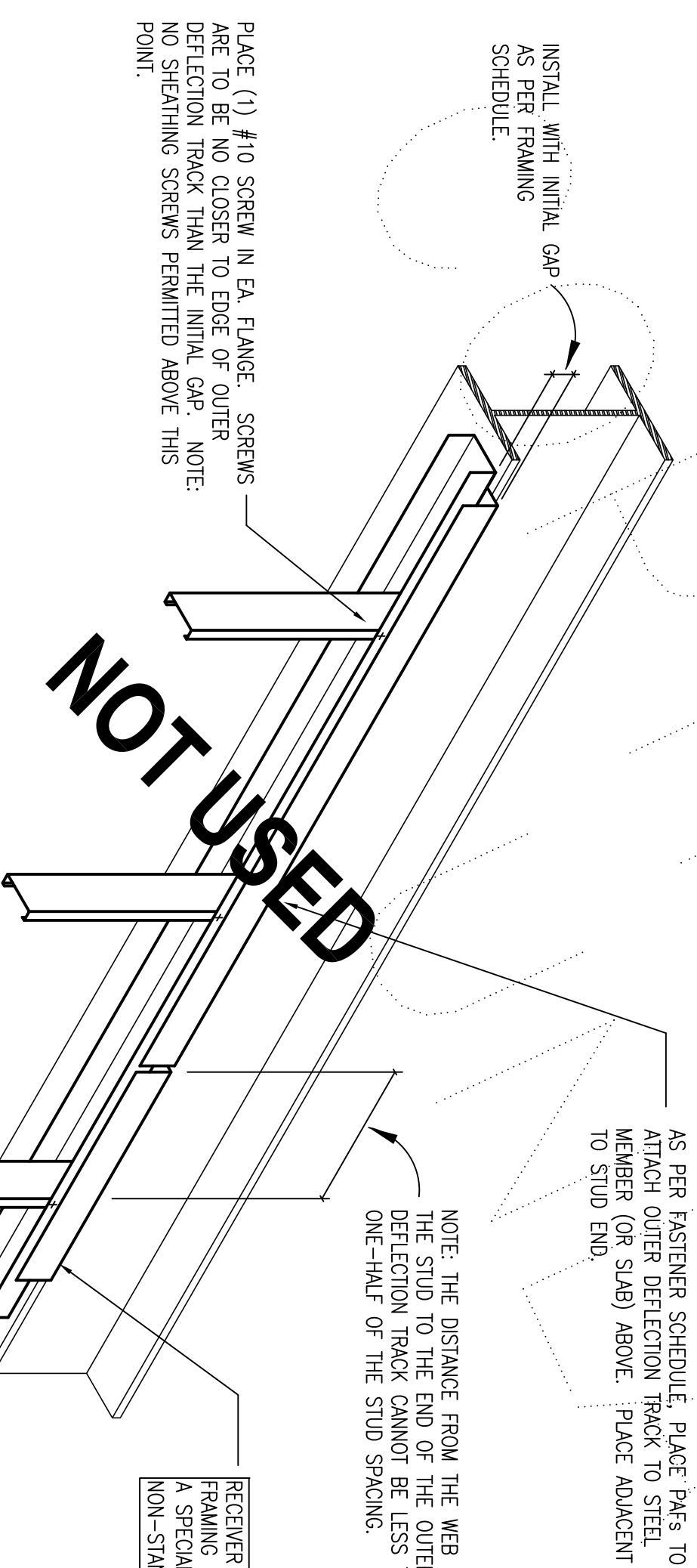
8" LONG FACE TRACK. SIZE AND THICKNESS TO MATCH STUD. ATTACH TO STUD w/ (6) #10 SCREWS AS SHOWN.

6 SLIDE CLIPS ON KING STUDS
DA-1



PROVIDE STEEL NETWORK Verticlip SL600 (OR APPROVED EQUAL) AT TOP OF KING STUD BUNDLE. AS PER SCHEDULE, A CLIP MAY BE REQUIRED ON ONE SIDE OR ON BOTH SIDES. FOR ATTACHING TO THE STUD, USE ONLY SCREWS SUPPLIED BY THE CLIP VENDOR. ATTACH CLIP, THROUGH TRACK, INTO STRUCTURAL STEEL, OR SLAB w/ PAFs AS PER SCHEDULE. INSTALL KING STUDS w/ END GAP AS PER SCHEDULE.

7 DEFLECTION END CLIPS AT TOP OF KING STUDS (CURVED OR STRAIGHT WALLS)
DA-1



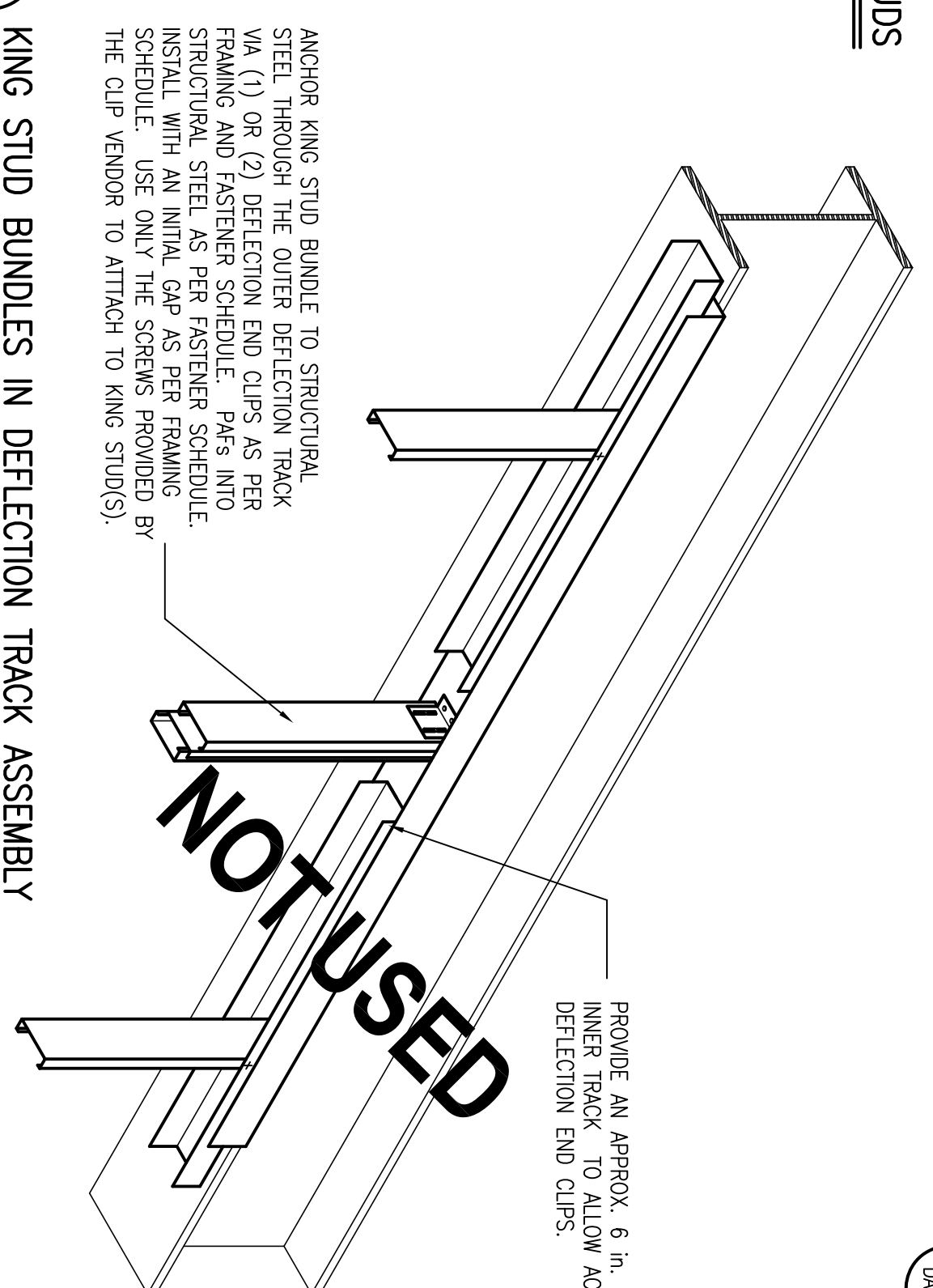
PLACE (1) #10 SCREW IN EA. FLANGE. SCREWS ARE TO BE NO CLOSER TO EDGE OF OUTER DEFLECTION TRACK THAN THE INITIAL GAP. NOTE: NO SHEARING SCREWS PERMITTED ABOVE THIS POINT.

INSTALL WITH INITIAL GAP AS PER FRAMING SCHEDULE.

NOTE: THE DISTANCE FROM THE WEB SIDE OF THE STUD TO THE END OF THE OUTER DEFLECTION TRACK CANNOT BE LESS THAN ONE-HALF OF THE STUD SPACING.

RECEIVER DEFLECTION TRACK AS PER FRAMING SCHEDULE. NOTE: GENERALLY, NON-STANDARD INSIDE/INSIDE DIMENSION.

8 CURTAINWALL DEFLECTION TRACK ASSEMBLY
DA-1



ANCHOR KING STUD BUNDLE TO STRUCTURAL STEEL THROUGH THE OUTER DEFLECTION TRACK VIA (1) OR (2) DEFLECTION END CLIPS AS PER FRAMING AND FASTENER SCHEDULE. PAFs INTO STRUCTURAL STEEL AS PER FASTENER SCHEDULE. INSTALL WITH AN INITIAL GAP AS PER FRAMING SCHEDULE. USE ONLY THE SCREWS PROVIDED BY THE CLIP VENDOR TO ATTACH TO KING STUD(S).

PROVIDE AN APPROX. 6 in. GAP IN THE NESTED TRACK TO ALLOW ACCESS FOR THE DEFLECTION END CLIPS.

9 KING STUD BUNDLES IN DEFLECTION TRACK ASSEMBLY
DA-1

BY:	DATE:	BY:	DATE:
RPK	11/21/08	RPK	11/21/08
CHK:	DATE:	CHK:	DATE:
RPK		RPK	
DWG. No.:	0899	DWG. No.:	DA-1

Copyrighted. Unlawful to copy without permission. Print Stops: Please call (205) 951-3825 to receive a faxed authorization to print.

K2 Engineering, Inc.
5048 Tucker, 1st Floor
Ironton, AL 35010
Voice & Fax: (205) 951-3825

DEFLECTION ACCOMMODATION FRAMING DETAILS
Sample Customer
Ironton, Alabama

© 1995-2008 All Rights Reserved